



LIVELIHOODS IMPROVEMENT OF URBAN POOR COMMUNITIES PROJECT (LIUPCP) National Urban Poverty Reduction Programme (NUPRP)



LOCAL GOVERNMENT DIVISION (LGD)
MINISTRY OF LOCAL GOVERNMENT, RURAL DEVELOPMENT & COOPERATIVES (MoLGRD&C)
GOVERNMENT OF THE PEOPLE'S REPUBLIC OF BANGLADESH

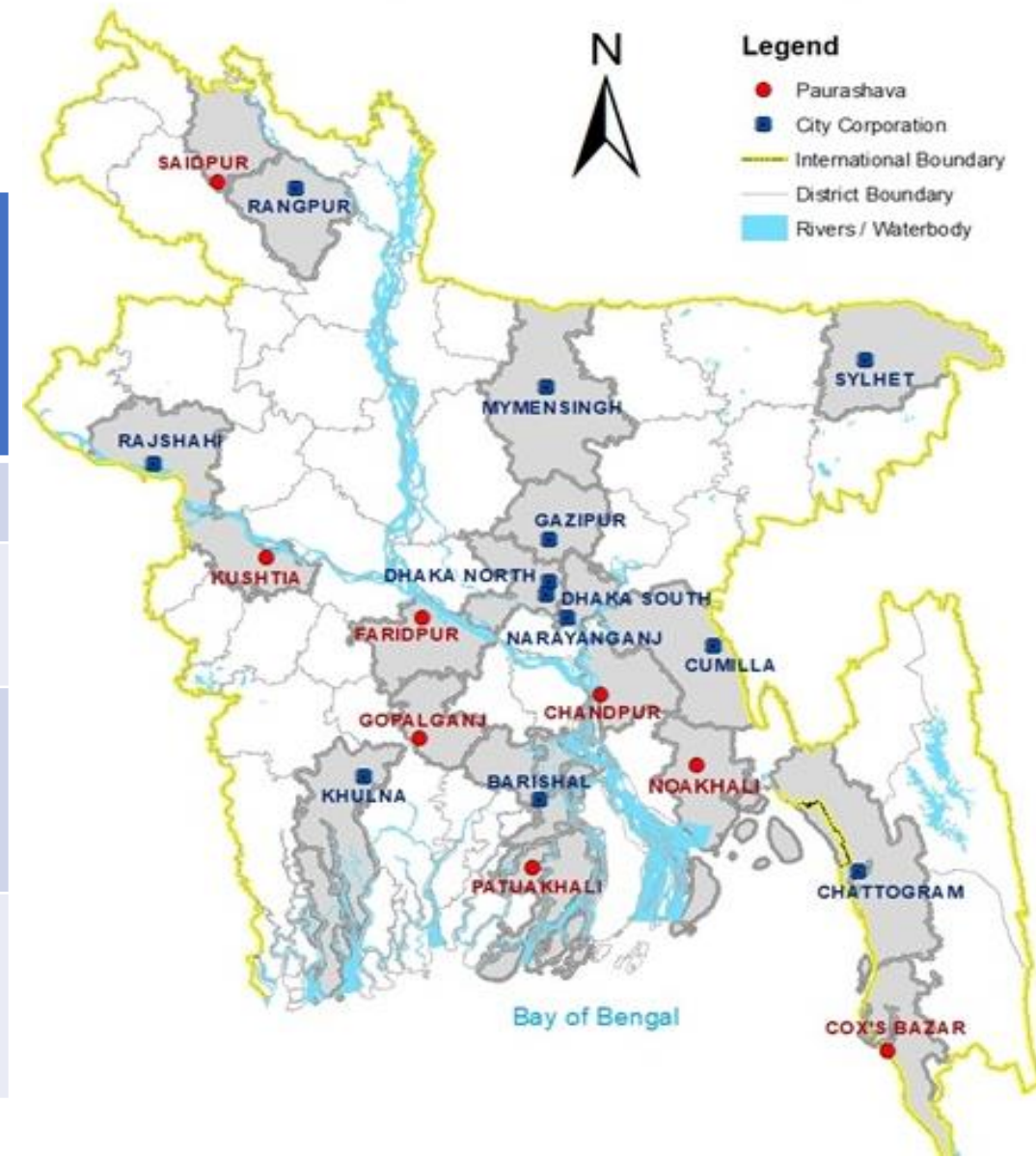


PROJECT OVERVIEW

GOAL: Sustainable improvement in the livelihoods and living conditions of 4 million poor people living in urban areas

PROJECT COST:	BDT 826.12 crore (US\$ 99m) GOB: BDT 128.19 crore FCDO: 689.63 crore UNDP: 8.31 crore
APPROVAL DATE:	14 August 2018
PROJECT AREAS:	Up to 12 City Corporations and 24 Municipalities
IMPLEMENTING AGENCY:	LGD, MoLGRDC, in close collaboration with City Corporations and Paurashavas
WORKING AREA AND BENEFICIAIES:	19 Towns as of 2021 and 4 million beneficiaries

Cities under NUPRP/LIUPC Project



PROJECT OPERATIONAL IN 20 CITIES

PHASE 1 CITIES/TOWNS (2018)

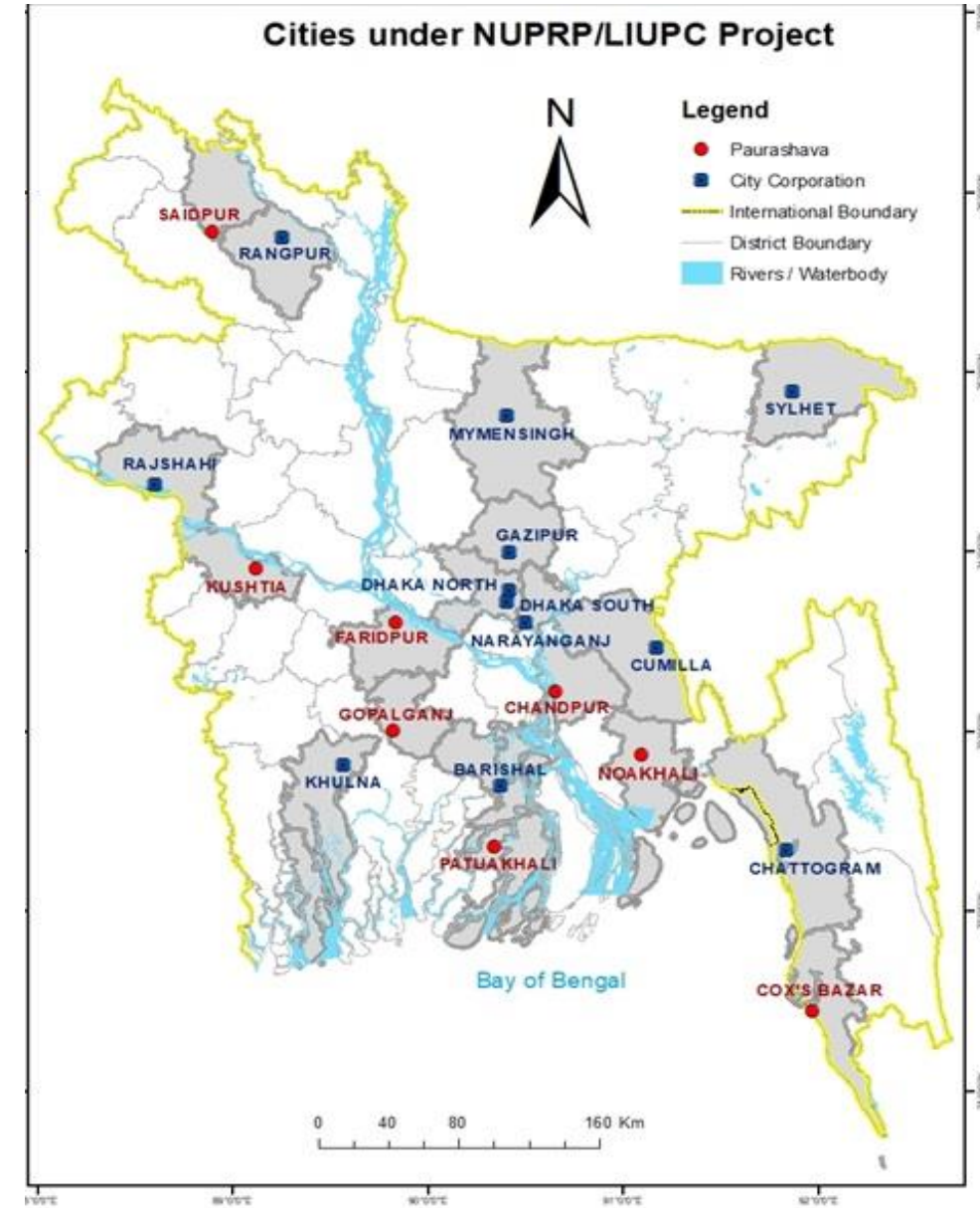
- Dhaka North City Corporation
- Narayanganj City Corporation
- Chattogram City Corporation
- Khulna City Corporation
- Sylhet City Corporation
- Mymensingh City Corporation
- Chandpur Paurashava

PHASE 2 CITIES/TOWNS (OCT 2018)

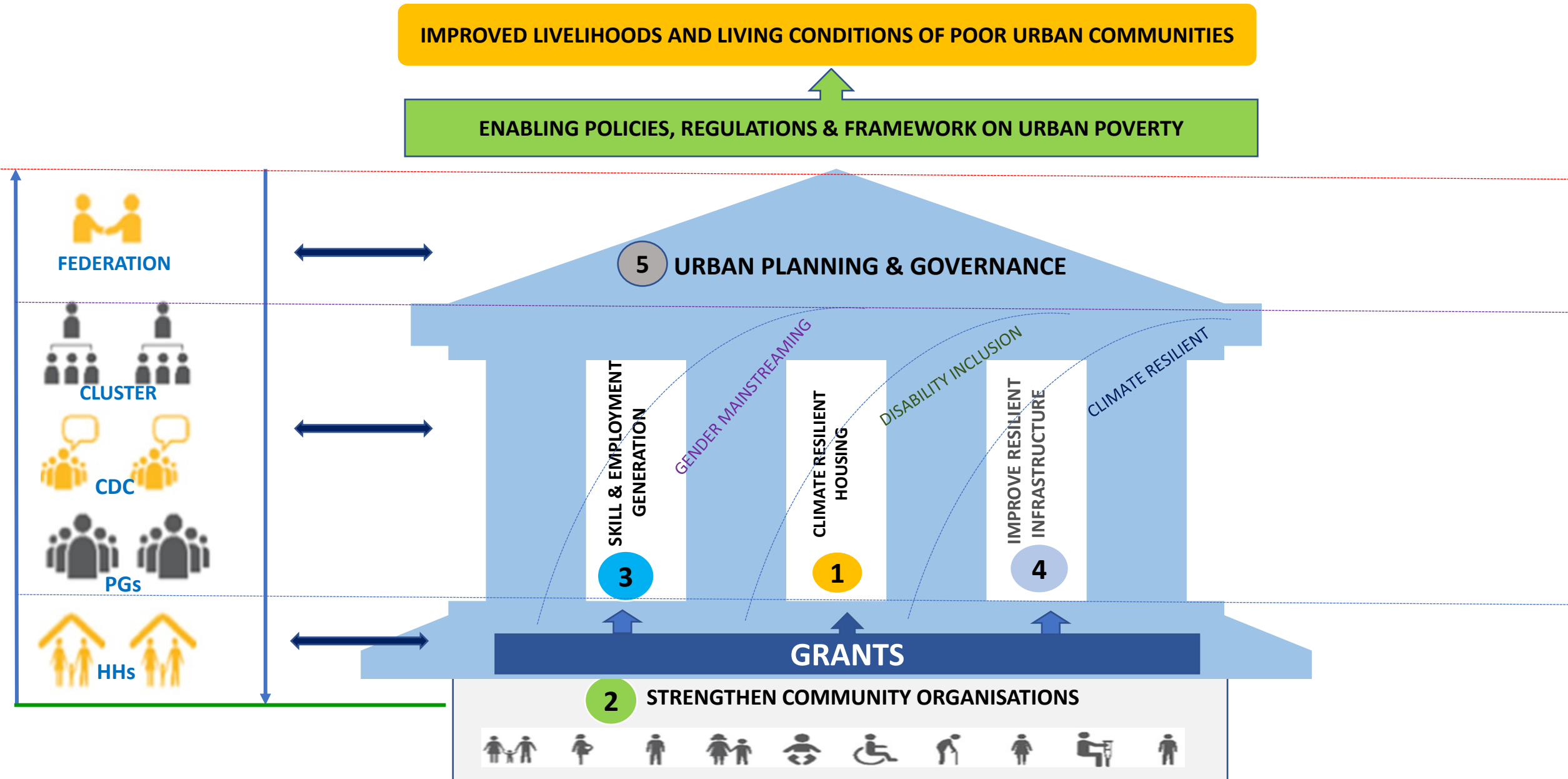
- Khustia Paurashava
- Faridpur Paurashava
- Patuakhali Paurashava

PHASE 3 CITIES/TOWNS (APRIL 2019)

- Dhaka South City Corporation
- Gazipur City Corporation
- Rajshahi City Corporation
- Rangpur City Corporation
- Barishal City Corporation
- Cumilla City Corporation
- Noakhali Paurashava
- Saidpur Paurashava
- Cox'sbazar Paurashava
- Gopalganj Paurashava



Theory of Change



Grants Mechanism

Household Level



Apprenticeship Grants for the Youth



Business Start-up Grants for Extreme Poor Women



Education Grants for Girls and Boys



Nutrition Grants for pregnant and lactating mothers and children



Housing for Extreme Poor Families

Community Level



Community Infrastructure Fund (footpath, drains, latrine, water, fecal sludge, etc.)



Climate Resilient Municipal Infrastructure Fund (CRMIF)



Community Housing Development Fund (CHDF)



Poverty Mapping in
534 Wards, **Poverty
ATLAS** in 515 Wards of
20 cities



- **TLCC and WC** in 8 Municipalities
- **Standing Committees** in 14 cities and towns



Poverty Profile in 20
cities, **CCVA** in 18 cities



Training on IFCA to
100 LG officials and
LIUPCP staffs

OUTPUT: 02

COMMUNITY MOBILISATION



3.10 M **Urban Poor Mobilised** in 19 Cities
(Jan-Jul 0.25 M)



13,462 **People With Disability (PWD)** participated and 2840 PWD, transgender & disadvantaged groups in leadership position

705,369 PG members **digitally registered** (Jan-Jul 30,289)



209 Community Action Plan(**CAP**) implemented



SAVINGS & CREDIT



354,490 community **members** (Jan-Jul 8,538)

0.31 M **savings** Jan-Jul

BDT 164.18 Crore **loan disbursed** among group members
(Jan-Jul 5.45 M)

BDT 59.34
Crore
savings





OUTPUT: 03



36,264 **Business Grantees**, 89.2% running business (Jan-Jul 3,191)



15,994 **Apprenticeship Grantees**, 66.1% completed course (Jan-Jul 5,719 grantees)



19,126 **Education Grantees**, 100% completed academic year (Jan-Jul 1,648)



25,796 Mother and Children received **Nutrition Grants** (Jan-Jul 11,247)

52,120 pregnant and lactating mother have improved knowledge of young child feeding practice

70,000 urban-poor benefitted from direct SEF support



214 **Safe Community Committee (SCC)** in 19 cities



143 **Gender Based Violence cases** reported 59 cases addressed by SCC



HOUSING CONSTRUCTION

OUTPUT: 04



336 Low-Cost Housing units
in Gopalganj under construction

Tender Floated

Chandpur, Kushtia,
Noakhali
273 Housing Units



HOUSING FINANCE



3 CHDFs Operational
(Narayanganj, Rajshahi &
Chattogram)

BDT 7.98 Crore
Housing Loan in 3
cities





Improved Resilient Infrastructure in and Serving, Low In-Come Settlements

OUTPUT: 05



132,960 Number of person with access to climate-resilient safely managed Drinking water and **256,042 people** Hygienic Gender & Disable friendly sanitation facilities



424,844 Number of people supported to cope with the effects of climate change through SIF and CRMIF (ICF KPI 1)



THANK YOU