



Locally Led Adaptation

NUPRP's Experience

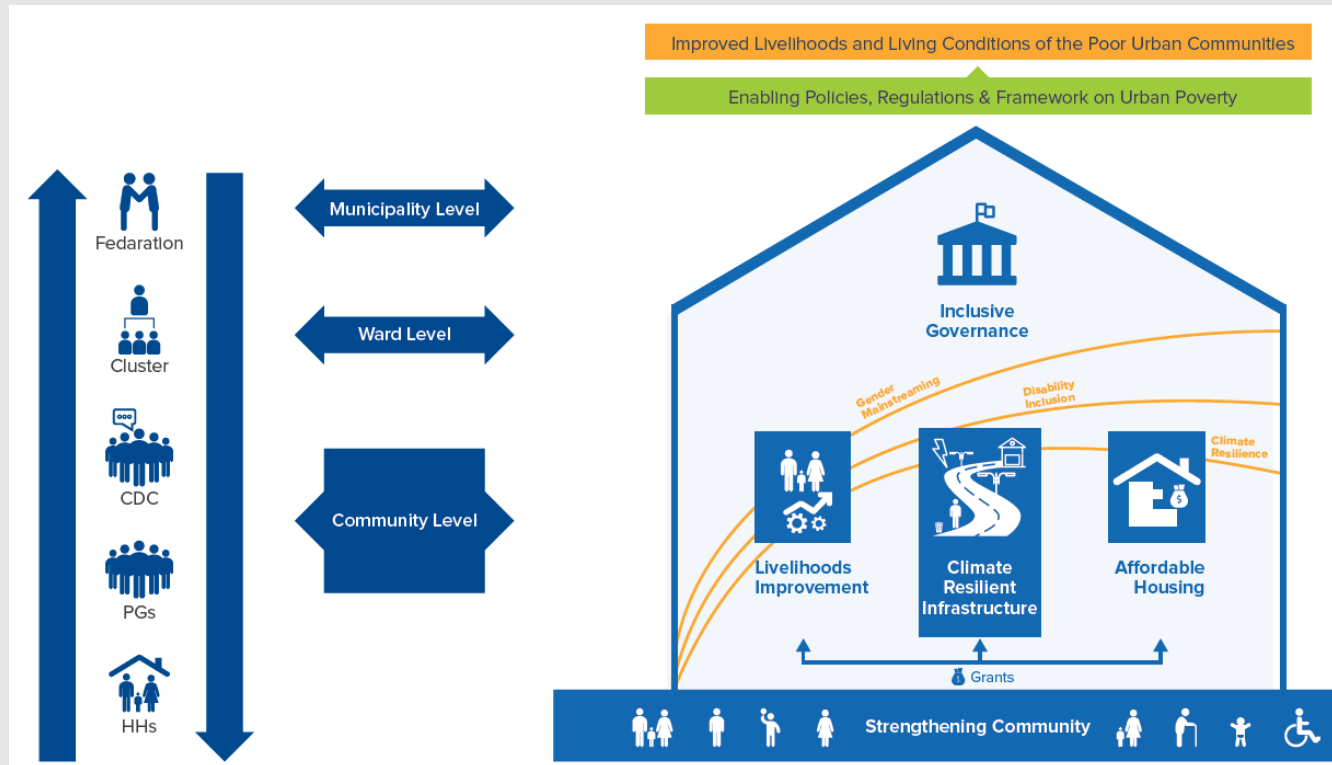


GOBESHONA
Global Conference 2

Exploring **Locally - Led Adaptation & Resilience** for COP27

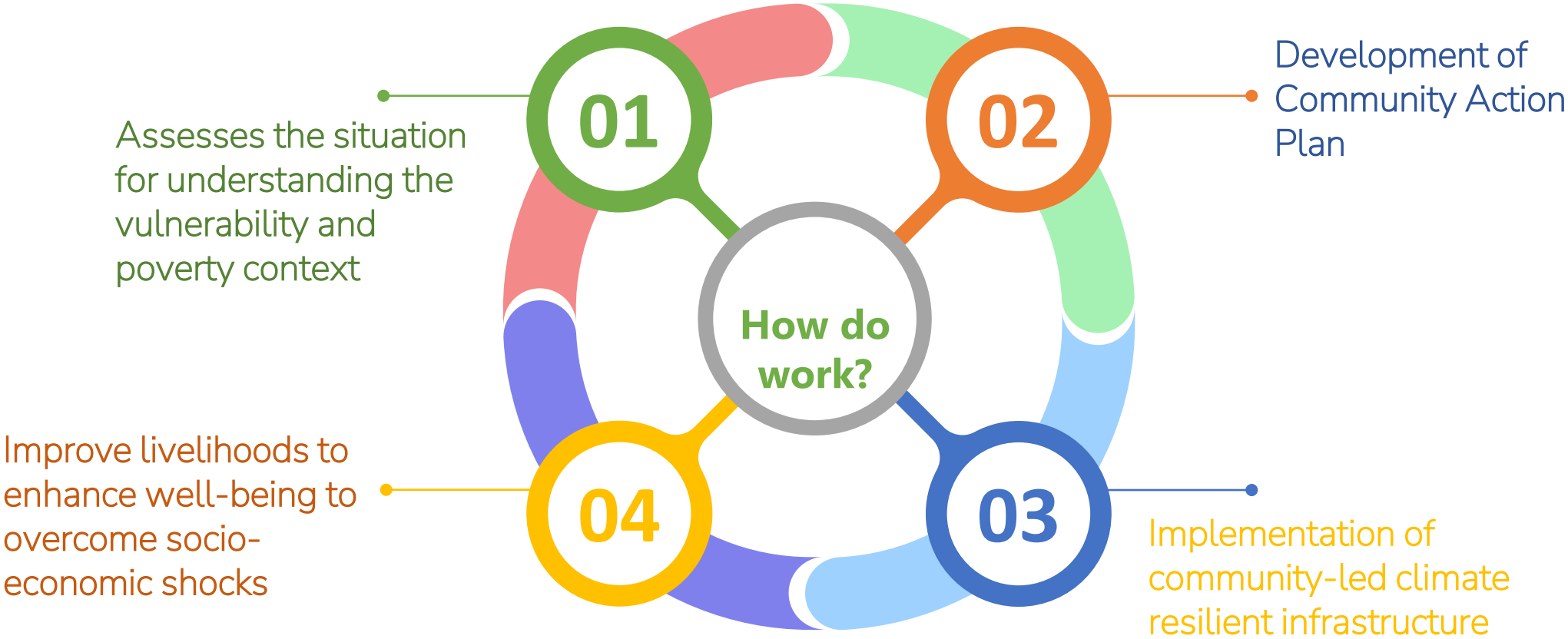
31st March 2022

The National Urban Poverty Reduction Programme Platform

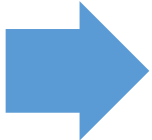


- Implementing agency and Partnership: 19 City Corporations and Municipalities through LGD, GOB
- 5 Interventions Areas
- UNDP, FCDO
- Community Organizations: Town Federations 19, More than 3000 CDCs, Primary Group 42000, HHs 700,000
- Total reach: 4 Million Urban Poor

Locally Led Adaptation Process



Community-led Planning



Partnership with City Authority

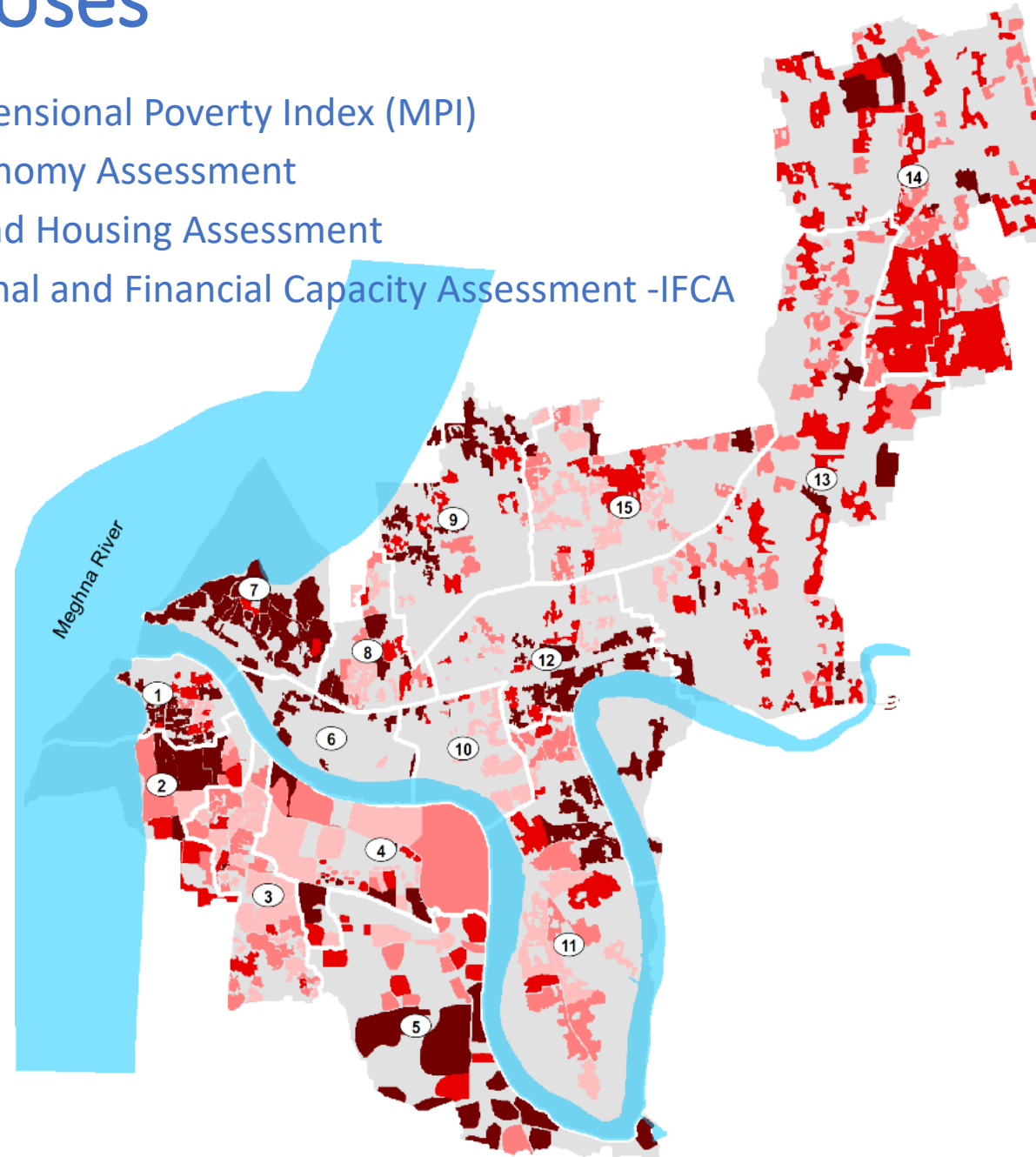


Community-led Implementation of Local Adaptation Plan

Tools NUPRP Uses

- Climate Change and Vulnerability Assessment
- City-wide Participatory Poverty Mapping
- Prioritization of Wards for Targeting
- Community/poverty Profiling

- Multidimensional Poverty Index (MPI)
- Local Economy Assessment
- Tenure and Housing Assessment
- Institutional and Financial Capacity Assessment -IFCA



Small-Medium scale climate adaptive infrastructure development

What We Do

- **1.3 million** vulnerable urban-poor people supported with over **20,000** climate-adaptive infrastructure development works.
- Helps **reduce climate related shocks** increasing in frequency and intensity e.g. Flooding, waterlogging, salinity intrusion, tidal surges, landslides, land erosion, heat shocks, environmental pollution etc.

- **Construction of underground drainage networks and creating linkages with community drain pipes**
- **Raised walkways**
- **Larger raised road access with built in drainage channels**
- **Raised latrines – unaffected by flooding**
- **Access to safe drinking water especially in high salinity areas**
- **Decentralised Waste Water Treatment System (DEWATS) for community and environment health and Reverse Osmosis Plant (R/O)**
- **Safe access to hill-top settlements and landslide prone areas**
- **Slope protection technologies like RCC retaining Wall, RCC Palisading, Brick Retaining wall etc**
- **Tree plantation where appropriate**



168,515 urban poor have access to **safe drinking water inc. in areas with high salinity**



181,250 urban poor have access to **sanitation including with adaptive features**



20,000 Community settlement improvements made



6 CRMIF in Chandpur, Khulna, Chattogram & Cox Bazar



Access to finance for climate-resilient housing for urban poor



Original Condition

- CHDF Revolving community housing fund for urban poor
- Reduced re-occurring annual cost of housing improvement/ construction due to climate related shocks



On-going improvement

COMMUNITY HOUSING CLIMATE FINANCE (CHDF)



2 CHDFs registered in Narayanganj & Rajshahi



CHDF Management Committee Elected in Chattogram, Rajshahi & Narayanganj



6.98 Crore in Housing Improvement Loans Provided to 450 HHs in Rajshahi, Narayanganj & Chattogram

Low-cost housing initiative

NUPRP in collaboration with GoB is also providing access to permanent shelter to the extremely vulnerable.



336 Low-Cost Housing units in Gopalganj



Land Use Master Plan and Layout in **Chandpur**, & **Khustia**



Vacant Land Mapping Completed in **Narayanganj**, **Chandpur** and under process in **Noakhali**, **Khustia**, **Gopalganj**



Digital Survey for **7,000** Housing Units in **Patuakhali** & **Noakhali**



Way Forward

Integration of Community Action Plan (CAP) in City and Town Development Plan including O&M Plan



Forge partnership and linkages with other development partners for expansion of NUPRP's successful locally-led adaptation model at other cities and towns



Consider local context in design of infrastructures and use locally available materials and innovation. Ensure user-friendliness for PWDs, "leaving no one behind".



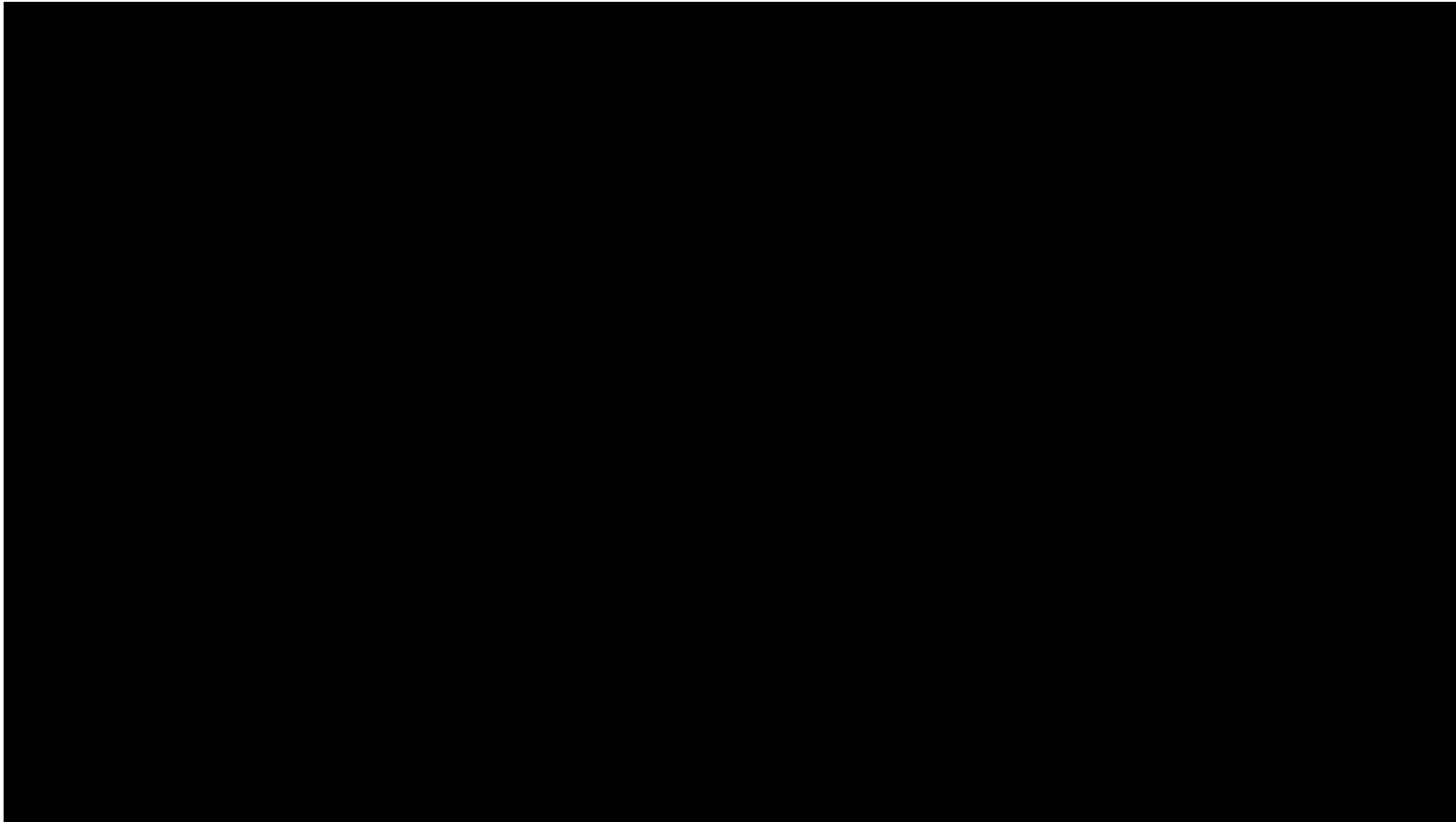
Integrate Sustainable Solid Waste (inc. Plastic) Management models for circular economy, benefitting waste pickers with livelihoods, and the local environment and drainage networks.



Build ownership of project model with Local & National governments to ensure sustainability of the interventions and further expansion.



NUPRP's climate action video (2021)



THANK YOU!

